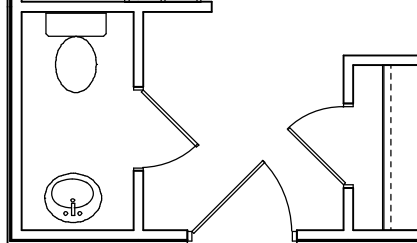
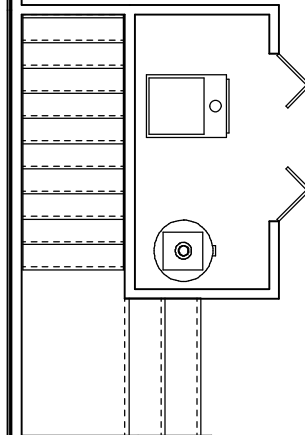
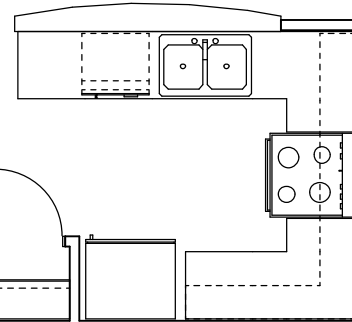


Patio
12'-0" X 12'-0"

Living Room
12'-10" X 14'-8"

Dining Room
10'-3" X 10'-5"



Garage
11'-0" X 19'-8"

First Floor

Cherry Tree Court
Townhomes

Woodland Development
INCORPORATED

Building and Development

130 Carlisle Street Hanover, PA 17331 (717) 633-9385
www.woodlanddevelopmentinc.com