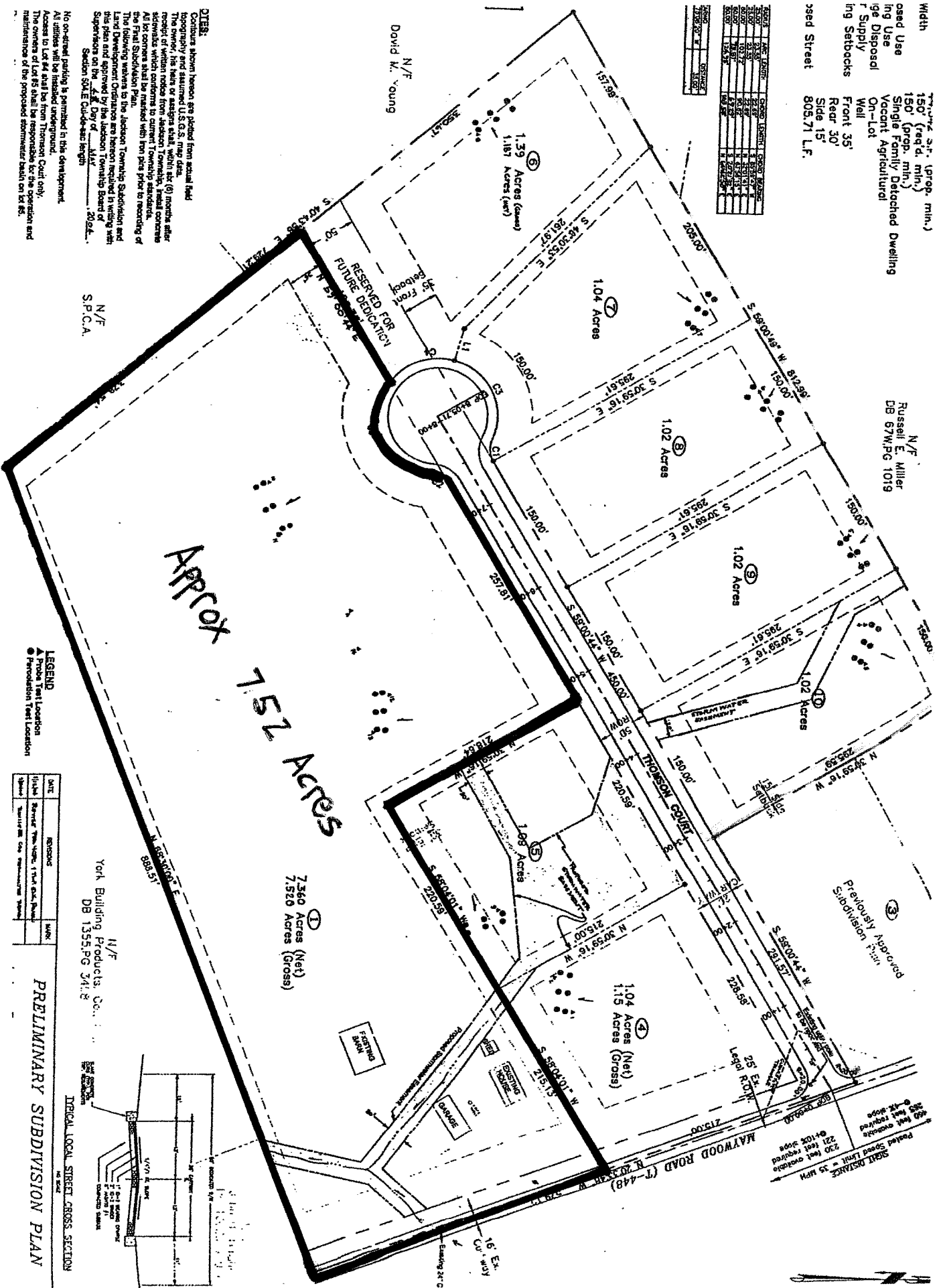


Width
 150' (prop. min.)
 150' (prop. min.)
 Single Family Detached Dwelling
 Vacant Agricultural
 On-Lot
 Well
 Front 35'
 Rear 30'
 Side 15'
 805.71 L.F.

N/F
 Russell E. Miller
 DB 67W/PG 1019

NO.	AREA	AREA	AREA	AREA	AREA	AREA	AREA	AREA	AREA
1	1.04	1.02	1.02	1.02	1.04	1.04	1.04	1.04	1.04
2	1.04	1.02	1.02	1.02	1.04	1.04	1.04	1.04	1.04
3	1.04	1.02	1.02	1.02	1.04	1.04	1.04	1.04	1.04
4	1.04	1.02	1.02	1.02	1.04	1.04	1.04	1.04	1.04
5	1.04	1.02	1.02	1.02	1.04	1.04	1.04	1.04	1.04
6	1.04	1.02	1.02	1.02	1.04	1.04	1.04	1.04	1.04
7	1.04	1.02	1.02	1.02	1.04	1.04	1.04	1.04	1.04
8	1.04	1.02	1.02	1.02	1.04	1.04	1.04	1.04	1.04
9	1.04	1.02	1.02	1.02	1.04	1.04	1.04	1.04	1.04
10	1.04	1.02	1.02	1.02	1.04	1.04	1.04	1.04	1.04
11	1.04	1.02	1.02	1.02	1.04	1.04	1.04	1.04	1.04
12	1.04	1.02	1.02	1.02	1.04	1.04	1.04	1.04	1.04
13	1.04	1.02	1.02	1.02	1.04	1.04	1.04	1.04	1.04
14	1.04	1.02	1.02	1.02	1.04	1.04	1.04	1.04	1.04
15	1.04	1.02	1.02	1.02	1.04	1.04	1.04	1.04	1.04
16	1.04	1.02	1.02	1.02	1.04	1.04	1.04	1.04	1.04
17	1.04	1.02	1.02	1.02	1.04	1.04	1.04	1.04	1.04
18	1.04	1.02	1.02	1.02	1.04	1.04	1.04	1.04	1.04
19	1.04	1.02	1.02	1.02	1.04	1.04	1.04	1.04	1.04
20	1.04	1.02	1.02	1.02	1.04	1.04	1.04	1.04	1.04
21	1.04	1.02	1.02	1.02	1.04	1.04	1.04	1.04	1.04
22	1.04	1.02	1.02	1.02	1.04	1.04	1.04	1.04	1.04
23	1.04	1.02	1.02	1.02	1.04	1.04	1.04	1.04	1.04
24	1.04	1.02	1.02	1.02	1.04	1.04	1.04	1.04	1.04
25	1.04	1.02	1.02	1.02	1.04	1.04	1.04	1.04	1.04
26	1.04	1.02	1.02	1.02	1.04	1.04	1.04	1.04	1.04
27	1.04	1.02	1.02	1.02	1.04	1.04	1.04	1.04	1.04
28	1.04	1.02	1.02	1.02	1.04	1.04	1.04	1.04	1.04
29	1.04	1.02	1.02	1.02	1.04	1.04	1.04	1.04	1.04
30	1.04	1.02	1.02	1.02	1.04	1.04	1.04	1.04	1.04
31	1.04	1.02	1.02	1.02	1.04	1.04	1.04	1.04	1.04
32	1.04	1.02	1.02	1.02	1.04	1.04	1.04	1.04	1.04
33	1.04	1.02	1.02	1.02	1.04	1.04	1.04	1.04	1.04
34	1.04	1.02	1.02	1.02	1.04	1.04	1.04	1.04	1.04
35	1.04	1.02	1.02	1.02	1.04	1.04	1.04	1.04	1.04
36	1.04	1.02	1.02	1.02	1.04	1.04	1.04	1.04	1.04
37	1.04	1.02	1.02	1.02	1.04	1.04	1.04	1.04	1.04
38	1.04	1.02	1.02	1.02	1.04	1.04	1.04	1.04	1.04
39	1.04	1.02	1.02	1.02	1.04	1.04	1.04	1.04	1.04
40	1.04	1.02	1.02	1.02	1.04	1.04	1.04	1.04	1.04
41	1.04	1.02	1.02	1.02	1.04	1.04	1.04	1.04	1.04
42	1.04	1.02	1.02	1.02	1.04	1.04	1.04	1.04	1.04
43	1.04	1.02	1.02	1.02	1.04	1.04	1.04	1.04	1.04
44	1.04	1.02	1.02	1.02	1.04	1.04	1.04	1.04	1.04
45	1.04	1.02	1.02	1.02	1.04	1.04	1.04	1.04	1.04
46	1.04	1.02	1.02	1.02	1.04	1.04	1.04	1.04	1.04
47	1.04	1.02	1.02	1.02	1.04	1.04	1.04	1.04	1.04
48	1.04	1.02	1.02	1.02	1.04	1.04	1.04	1.04	1.04
49	1.04	1.02	1.02	1.02	1.04	1.04	1.04	1.04	1.04
50	1.04	1.02	1.02	1.02	1.04	1.04	1.04	1.04	1.04
51	1.04	1.02	1.02	1.02	1.04	1.04	1.04	1.04	1.04
52	1.04	1.02	1.02	1.02	1.04	1.04	1.04	1.04	1.04
53	1.04	1.02	1.02	1.02	1.04	1.04	1.04	1.04	1.04
54	1.04	1.02	1.02	1.02	1.04	1.04	1.04	1.04	1.04
55	1.04	1.02	1.02	1.02	1.04	1.04	1.04	1.04	1.04
56	1.04	1.02	1.02	1.02	1.04	1.04	1.04	1.04	1.04
57	1.04	1.02	1.02	1.02	1.04	1.04	1.04	1.04	1.04
58	1.04	1.02	1.02	1.02	1.04	1.04	1.04	1.04	1.04
59	1.04	1.02	1.02	1.02	1.04	1.04	1.04	1.04	1.04
60	1.04	1.02	1.02	1.02	1.04	1.04	1.04	1.04	1.04
61	1.04	1.02	1.02	1.02	1.04	1.04	1.04	1.04	1.04
62	1.04	1.02	1.02	1.02	1.04	1.04	1.04	1.04	1.04
63	1.04	1.02	1.02	1.02	1.04	1.04	1.04	1.04	1.04
64	1.04	1.02	1.02	1.02	1.04	1.04	1.04	1.04	1.04
65	1.04	1.02	1.02	1.02	1.04	1.04	1.04	1.04	1.04
66	1.04	1.02	1.02	1.02	1.04	1.04	1.04	1.04	1.04
67	1.04	1.02	1.02	1.02	1.04	1.04	1.04	1.04	1.04
68	1.04	1.02	1.02	1.02	1.04	1.04	1.04	1.04	1.04
69	1.04	1.02	1.02	1.02	1.04	1.04	1.04	1.04	1.04
70	1.04	1.02	1.02	1.02	1.04	1.04	1.04	1.04	1.04
71	1.04	1.02	1.02	1.02	1.04	1.04	1.04	1.04	1.04
72	1.04	1.02	1.02	1.02	1.04	1.04	1.04	1.04	1.04
73	1.04	1.02	1.02	1.02	1.04	1.04	1.04	1.04	1.04
74	1.04	1.02	1.02	1.02	1.04	1.04	1.04	1.04	1.04
75	1.04	1.02	1.02	1.02	1.04	1.04	1.04	1.04	1.04
76	1.04	1.02	1.02	1.02	1.04	1.04	1.04	1.04	1.04
77	1.04	1.02	1.02	1.02	1.04	1.04	1.04	1.04	1.04
78	1.04	1.02	1.02	1.02	1.04	1.04	1.04	1.04	1.04
79	1.04	1.02	1.02	1.02	1.04	1.04	1.04	1.04	1.04
80	1.04	1.02	1.02	1.02	1.04	1.04	1.04	1.04	1.04
81	1.04	1.02	1.02	1.02	1.04	1.04	1.04	1.04	1.04
82	1.04	1.02	1.02	1.02	1.04	1.04	1.04	1.04	1.04
83	1.04	1.02	1.02	1.02	1.04	1.04	1.04	1.04	1.04
84	1.04	1.02	1.02	1.02	1.04	1.04	1.04	1.04	1.04
85	1.04	1.02	1.02	1.02	1.04	1.04	1.04	1.04	1.04
86	1.04	1.02	1.02	1.02	1.04	1.04	1.04	1.04	1.04
87	1.04	1.02	1.02	1.02	1.04	1.04	1.04	1.04	1.04
88	1.04	1.02	1.02	1.02	1.04	1.04	1.04	1.04	1.04
89	1.04	1.02	1.02	1.02	1.04	1.04	1.04	1.04	1.04
90	1.04	1.02	1.02	1.02	1.04	1.04	1.04	1.04	1.04
91	1.04	1.02	1.02	1.02	1.04	1.04	1.04	1.04	1.04
92	1.04	1.02	1.02	1.02	1.04	1.04	1.04	1.04	1.04
93	1.04	1.02	1.02	1.02	1.04	1.04	1.04	1.04	1.04
94	1.04	1.02	1.02	1.02	1.04	1.04	1.04	1.04	1.04
95	1.04	1.02	1.02	1.02	1.04	1.04	1.04	1.04	1.04
96	1.04	1.02	1.02	1.02	1.04	1.04	1.04	1.04	1.04
97	1.04	1.02	1.02	1.02	1.04	1.04	1.04	1.04	1.04
98	1.04	1.02	1.02	1.02	1.04	1.04	1.04	1.04	1.04
99	1.04	1.02	1.02	1.02	1.04	1.04	1.04	1.04	1.04
100	1.04	1.02	1.02	1.02	1.04	1.04	1.04	1.04	1.04



NOTES:
 Contours shown hereon are plotted from actual field topography and assumed U.S.G.S. map data. The owner, his heirs or assigns shall, within six (6) months after the date of record of this plan, cause to be recorded in the office of the Clerk of the County of York, Pennsylvania, a plat showing the actual location of the proposed subdivision. All lot corners shall be marked with iron pins prior to recording of the Final Subdivision Plan. The following covenants to the Jackson Township Subdivision and Land Development Ordinance are hereby made in writing with the Township Board of Supervisors on the 1st Day of May, 1988.
 Section 504.E Curb-to-curb length
 N/F
 S.P.C.A.

No on-street parking is permitted in this development. All utilities will be installed underground. Access to Lot 14 shall be from Thomson Court only. The owners of Lots 15 shall be responsible for the operation and maintenance of the proposed stormwater basin on lot 15.

STREET DISTANCE
 220 feet required
 230 feet required
 40 MPH
 35 MPH

LEGEND
 ▲ Probe Test Location
 ● Foundation Test Location

DATE	REVISION	MARK

York Building Products Co., Inc.
 DB 1355.PG 3/11/8
 TYPICAL LOCAL STREET CROSS SECTION
 PRELIMINARY SUBDIVISION PLAN